



Course Selection 2020-2021

Guidelines and Procedures for Current
Grades 9 through 11



Course Selection Card QUICK REFERENCE GUIDE

This quick reference guide is designed to help guide you through the process of selecting your courses for the 2019-2020 school year. **We are on a 4X4 A/B block.**

Carefully review the courses listed on your grade level course card.

Review your academic history listed on the back of the course selection card.

Know your graduation requirements and where you stand in reference to them.

Refer to course descriptions for clarification located on our school website under guidance.

Reflect on your experience from this school year. What classes did you enjoy? Were you able to keep up with the workload? Were classes too difficult? Too easy?

Select seven (7) classes: a math class, a science class, a social studies class, an English class and 3 electives.

Write in 3 alternate classes. You may get one of your alternates, so chose carefully.

All students will have an on campus Personalization period.

Off campus study hall is reserved for dual enrollment students only.

Your current teachers will sign next to their recommendation.


Classes with “Pre” require the signature of the teacher currently teaching that course.

Classes like yearbook, newspaper, teaching assistant, peer counseling, drama, music, student government and others **require sponsor approval and/or application.**

Choose a manageable course load.

Final review, double check your selections and confer with your parent or guardian.

Signatures are required from you the student and your parent or guardian.

Standard Diploma Graduation Requirements	
Students Entering Grade Nine in School Year 2014 – 2015 and After	
	
English	4 Credits
Mathematics	1 Credit Algebra (EOC=30% of final grade) 1 Credit Geometry (EOC=30% of final grade) 2 Credits Additional Math (If Algebra II is selected, Algebra II EOC will count for 30% of the final grade)
Science	1 Credit Biology (EOC=30% of final grade) 2 Credits Additional Science identified as Equally Rigorous
Social Studies	1 Credit World History 1 Credit United States History (EOC =30% of final grade) .5 Credit United States Gov't .5 Credit Economics with Financial Literacy
World Languages	Not required for graduation. Minimum 2 years of the same language required for admission into most universities and some Bright Futures Scholarships.
Fine and Performing Arts, Speech/Debate, or Practical Arts	1 Credit in Fine or Performing Arts, Speech and Debate, or eligible Practical Arts
Physical Education	1 Credit in Physical Education to include the integration of Health (HOPE)
Electives	8 Credits
TOTAL	24 Credits
State Assessments	Students must earn a passing score on the Grade 10 ELA statewide standardized assessment Students must earn a passing score on the Algebra 1 EOC
On-Line Course	Requires a full course to be completed
Grade Point Average	Cumulative GPA of 2.0 on a 4.0 scale (unweighted)
Service Hours	40 hours required
Diploma Designations & ACCEL 18-Credit Option	
Scholar Designation	In addition to meeting the standard high school diploma requirements: -Algebra II and pass the EOC -Pass the Geometry EOC -Statistics or equally rigorous math -Chemistry or Physics and another equally rigorous science -2 credits in the same world language -Earn at least one credit in AP, IB, AICE or a dual enrollment course -Pass Biology EOC or earn minimum score required to earn college credit on AP, IB or AICE exam -Pass US History EOC or earn minimum score required to earn college credit on AP, IB or AICE exam
Merit Designation	In addition to meeting the standard high school diploma requirements: Attain one or more industry certifications from the list established
ACCEL Program (18 credits minimum)	Meet all requirements for a standard high school diploma with the following exceptions: -Physical Education not required -Online course not required -3 elective credits only -Service hours are not required



Curriculum Guide and Course Selection

- Academy of Finance (AOF)
- Culinary Arts
- Digital Technology
- Drama
- Electives
- Engineering
- English
- Hospitality & Tourism
- JROTC
- Marketing Management
- Math
- Music
- PE
- Reading
- Science
- Social Sciences

Under Guidance
and then
Guidance Information

www.douglashigh.browardschools.com



STONEMAN DOUGLAS HIGH

5901 Pine Island Road * Parkland * Florida 33076
Tel 754.322.2150 * FAX 754.322.2280

BROWARD COUNTY  PUBLIC SCHOOLS



Stoneman Douglas High School 2020-2021 Grade 11

English: _____ Student Number: _____ Date: _____

Section 7 Courses and 3 Electives

***Requires Co-Coordinator Participation

CORE COURSES		CAREER ACADEMIES	
LANGUAGE ARTS		MARKETING MGMT (800) (Participant Required)	
English 1	20011000	1. PPR _____ Intro to Marketing***	80011100
English 2 Honors	20011000	2. PPR _____ Accounting App 1 Honors***	80011200
English 3 Honors	20011000	3. PPR _____ Marketing Mgt Honors***	80011300
AP English Language	20011000	HOSPITALITY & TOURISM (Participant Required)	
AP English Language & Composition	20011000	1. PPR _____ Hospitality	80011100
AP English Language & Composition	20011000	2. PPR _____ Hospitality & Tourism	80011200
AP English Language & Composition	20011000	3. PPR _____ Hospitality & Tourism	80011300
AP English Language & Composition	20011000	PERSONAL TECHNOLOGY	
AP English Language & Composition	20011000	1. PPR _____ Intro to Information Tech	80011100
AP English Language & Composition	20011000	2. PPR _____ Digital Design 1	80011200
AP English Language & Composition	20011000	3. PPR _____ Digital Design 2	80011300
AP English Language & Composition	20011000	4. PPR _____ Digital Design 3	80011400
AP English Language & Composition	20011000	COMPUTER SCIENCE	
AP English Language & Composition	20011000	1. PPR _____ Advanced IT Honors	80011100
AP English Language & Composition	20011000	2. PPR _____ Found. of Programming Honors	80011200
AP English Language & Composition	20011000	3. PPR _____ AP Computer Science Principles	80011300
AP English Language & Composition	20011000	4. PPR _____ AP Computer Science A	80011400
AP English Language & Composition	20011000	CHEMISTRY ARTS	
AP English Language & Composition	20011000	1. PPR _____ Culinary Arts 1	80011100
AP English Language & Composition	20011000	2. PPR _____ Culinary Arts 2	80011200
AP English Language & Composition	20011000	3. PPR _____ Culinary Arts 3	80011300
AP English Language & Composition	20011000	4. PPR _____ Culinary Arts 4	80011400
AP English Language & Composition	20011000	DIGITAL VIDEO TECHNOLOGY	
AP English Language & Composition	20011000	1. PPR _____ Digital Video Tech 1 Honors	80011100
AP English Language & Composition	20011000	2. PPR _____ Digital Video Tech 2 Honors	80011200
AP English Language & Composition	20011000	3. PPR _____ Digital Video Tech 3 Honors	80011300
AP English Language & Composition	20011000	ENGINEERING	
AP English Language & Composition	20011000	1. PPR _____ Engineering 1 Honors	80011100
AP English Language & Composition	20011000	2. PPR _____ Engineering 2 Honors	80011200
AP English Language & Composition	20011000	3. PPR _____ Engineering 3 Honors	80011300
AP English Language & Composition	20011000	4. PPR _____ Engineering 4 Honors	80011400
AP English Language & Composition	20011000	TEACHING PROFESSION	
AP English Language & Composition	20011000	1. PPR _____ Intro to Teaching Profession	80011100
AP English Language & Composition	20011000	2. PPR _____ Human Growth & Development	80011200
AP English Language & Composition	20011000	3. PPR _____ Curriculum & Instruction Honors	80011300
AP English Language & Composition	20011000	IB/DTC	
AP English Language & Composition	20011000	1. PPR _____ Leadership Ed & Training 1	80011100
AP English Language & Composition	20011000	2. PPR _____ Leadership Ed & Training 2	80011200
AP English Language & Composition	20011000	3. PPR _____ Leadership Ed & Training 3	80011300
AP English Language & Composition	20011000	4. PPR _____ Leadership Ed & Training 4	80011400
AP English Language & Composition	20011000	HEALTH SCIENCE	
AP English Language & Composition	20011000	1. PPR _____ Health Science Honors	80011100
AP English Language & Composition	20011000	PERSONAL FINANCE	
AP English Language & Composition	20011000	1. PPR _____ Personal Finance (Participant Required)	80011100
AP English Language & Composition	20011000	2. PPR _____ Case & Prac. of Personal Finance	80011200
AP English Language & Composition	20011000	3. PPR _____ Taxes Sports 1 & 2	80011300
AP English Language & Composition	20011000	4. PPR _____ Taxes Sports 3 & 4	80011400
AP English Language & Composition	20011000	5. PPR _____ Basketball	80011500
AP English Language & Composition	20011000	6. PPR _____ Soccer	80011600
AP English Language & Composition	20011000	7. PPR _____ Volleyball	80011700
AP English Language & Composition	20011000	8. PPR _____ Tennis	80011800
AP English Language & Composition	20011000	9. PPR _____ Golf	80011900
AP English Language & Composition	20011000	10. PPR _____ Swimming	80012000
AP English Language & Composition	20011000	11. PPR _____ Archery	80012100
AP English Language & Composition	20011000	12. PPR _____ Fencing	80012200
AP English Language & Composition	20011000	13. PPR _____ Equestrian	80012300
AP English Language & Composition	20011000	14. PPR _____ Ice Skating	80012400
AP English Language & Composition	20011000	15. PPR _____ Figure Skating	80012500
AP English Language & Composition	20011000	16. PPR _____ Winter Guard	80012600
AP English Language & Composition	20011000	17. PPR _____ Jazz Band	80012700
AP English Language & Composition	20011000	18. PPR _____ Concert Band	80012800
AP English Language & Composition	20011000	19. PPR _____ Symphonic Band	80012900
AP English Language & Composition	20011000	20. PPR _____ String Ensemble	80013000
AP English Language & Composition	20011000	21. PPR _____ Chamber Music	80013100
AP English Language & Composition	20011000	22. PPR _____ Jazz Ensemble	80013200
AP English Language & Composition	20011000	23. PPR _____ Wind Ensemble	80013300
AP English Language & Composition	20011000	24. PPR _____ Percussion Ensemble	80013400
AP English Language & Composition	20011000	25. PPR _____ Vocal Ensemble	80013500
AP English Language & Composition	20011000	26. PPR _____ Theater	80013600
AP English Language & Composition	20011000	27. PPR _____ Musical Theater	80013700
AP English Language & Composition	20011000	28. PPR _____ Film Studies	80013800
AP English Language & Composition	20011000	29. PPR _____ Animation	80013900
AP English Language & Composition	20011000	30. PPR _____ Game Design	80014000
AP English Language & Composition	20011000	31. PPR _____ Web Design	80014100
AP English Language & Composition	20011000	32. PPR _____ Graphic Design	80014200
AP English Language & Composition	20011000	33. PPR _____ Advertising	80014300
AP English Language & Composition	20011000	34. PPR _____ Public Speaking	80014400
AP English Language & Composition	20011000	35. PPR _____ Debate	80014500
AP English Language & Composition	20011000	36. PPR _____ Model UN	80014600
AP English Language & Composition	20011000	37. PPR _____ International Relations	80014700
AP English Language & Composition	20011000	38. PPR _____ Psychology	80014800
AP English Language & Composition	20011000	39. PPR _____ Sociology	80014900
AP English Language & Composition	20011000	40. PPR _____ Anthropology	80015000
AP English Language & Composition	20011000	41. PPR _____ History	80015100
AP English Language & Composition	20011000	42. PPR _____ World History	80015200
AP English Language & Composition	20011000	43. PPR _____ AP World History	80015300
AP English Language & Composition	20011000	44. PPR _____ AP European History	80015400
AP English Language & Composition	20011000	45. PPR _____ AP United States History	80015500
AP English Language & Composition	20011000	46. PPR _____ AP American Government	80015600
AP English Language & Composition	20011000	47. PPR _____ AP Computer Science Principles	80015700
AP English Language & Composition	20011000	48. PPR _____ AP Computer Science A	80015800
AP English Language & Composition	20011000	49. PPR _____ AP Statistics	80015900
AP English Language & Composition	20011000	50. PPR _____ AP Calculus AB	80016000
AP English Language & Composition	20011000	51. PPR _____ AP Calculus BC	80016100
AP English Language & Composition	20011000	52. PPR _____ AP Physics 1	80016200
AP English Language & Composition	20011000	53. PPR _____ AP Physics 2	80016300
AP English Language & Composition	20011000	54. PPR _____ AP Physics C: Mechanics	80016400
AP English Language & Composition	20011000	55. PPR _____ AP Physics C: Electricity & Magnetism	80016500
AP English Language & Composition	20011000	56. PPR _____ AP Chemistry	80016600
AP English Language & Composition	20011000	57. PPR _____ AP Biology	80016700
AP English Language & Composition	20011000	58. PPR _____ AP Environmental Science	80016800
AP English Language & Composition	20011000	59. PPR _____ AP Human Geography	80016900
AP English Language & Composition	20011000	60. PPR _____ AP World Languages	80017000
AP English Language & Composition	20011000	61. PPR _____ AP Music Theory	80017100
AP English Language & Composition	20011000	62. PPR _____ AP Music Theory Honors	80017200
AP English Language & Composition	20011000	63. PPR _____ AP Music Theory Honors	80017300
AP English Language & Composition	20011000	64. PPR _____ AP Music Theory Honors	80017400
AP English Language & Composition	20011000	65. PPR _____ AP Music Theory Honors	80017500
AP English Language & Composition	20011000	66. PPR _____ AP Music Theory Honors	80017600
AP English Language & Composition	20011000	67. PPR _____ AP Music Theory Honors	80017700
AP English Language & Composition	20011000	68. PPR _____ AP Music Theory Honors	80017800
AP English Language & Composition	20011000	69. PPR _____ AP Music Theory Honors	80017900
AP English Language & Composition	20011000	70. PPR _____ AP Music Theory Honors	80018000
AP English Language & Composition	20011000	71. PPR _____ AP Music Theory Honors	80018100
AP English Language & Composition	20011000	72. PPR _____ AP Music Theory Honors	80018200
AP English Language & Composition	20011000	73. PPR _____ AP Music Theory Honors	80018300
AP English Language & Composition	20011000	74. PPR _____ AP Music Theory Honors	80018400
AP English Language & Composition	20011000	75. PPR _____ AP Music Theory Honors	80018500
AP English Language & Composition	20011000	76. PPR _____ AP Music Theory Honors	80018600
AP English Language & Composition	20011000	77. PPR _____ AP Music Theory Honors	80018700
AP English Language & Composition	20011000	78. PPR _____ AP Music Theory Honors	80018800
AP English Language & Composition	20011000	79. PPR _____ AP Music Theory Honors	80018900
AP English Language & Composition	20011000	80. PPR _____ AP Music Theory Honors	80019000
AP English Language & Composition	20011000	81. PPR _____ AP Music Theory Honors	80019100
AP English Language & Composition	20011000	82. PPR _____ AP Music Theory Honors	80019200
AP English Language & Composition	20011000	83. PPR _____ AP Music Theory Honors	80019300
AP English Language & Composition	20011000	84. PPR _____ AP Music Theory Honors	80019400
AP English Language & Composition	20011000	85. PPR _____ AP Music Theory Honors	80019500
AP English Language & Composition	20011000	86. PPR _____ AP Music Theory Honors	80019600
AP English Language & Composition	20011000	87. PPR _____ AP Music Theory Honors	80019700
AP English Language & Composition	20011000	88. PPR _____ AP Music Theory Honors	80019800
AP English Language & Composition	20011000	89. PPR _____ AP Music Theory Honors	80019900
AP English Language & Composition	20011000	90. PPR _____ AP Music Theory Honors	80020000

Language Arts

Math

Science

Social Studies

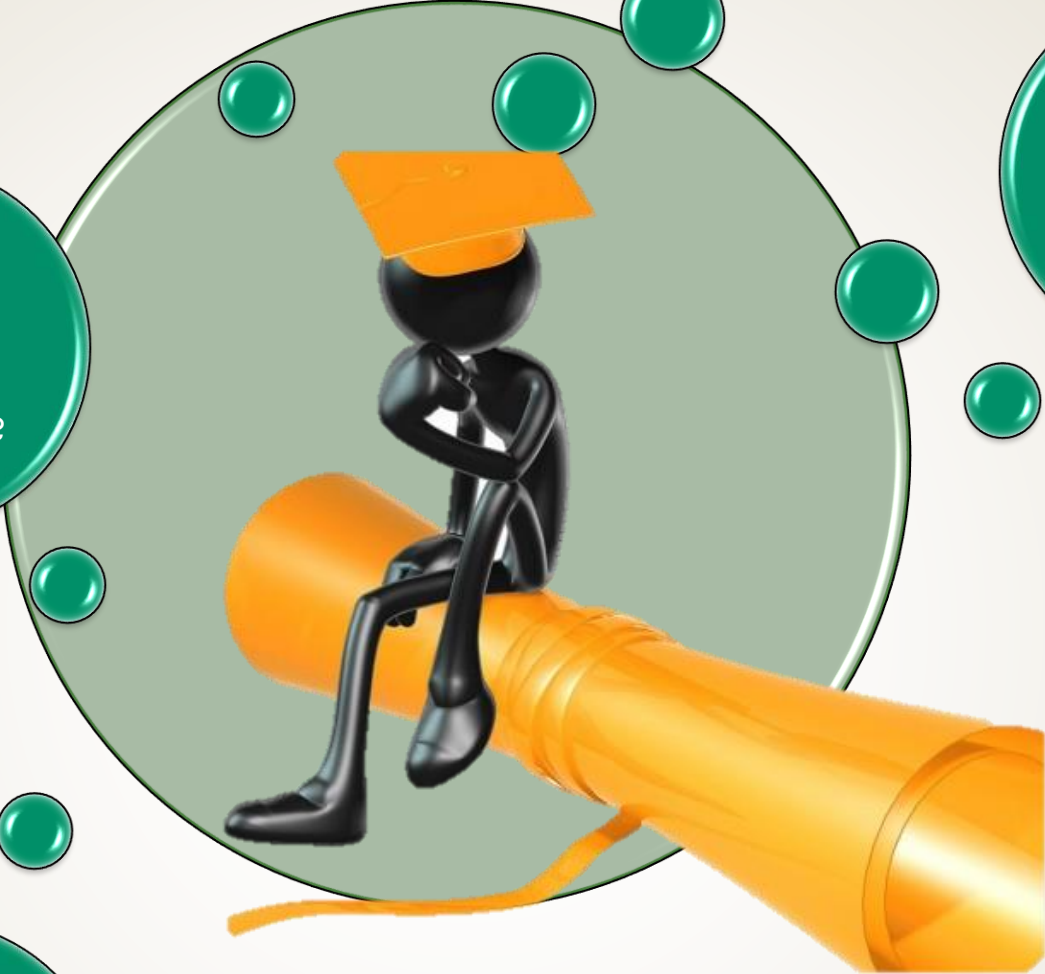
3 Electives

3 Alternates





Were you able to keep up with your workload?



What Classes did you enjoy?

Were your classes too difficult?

Were your classes too easy?



Block Schedule

	Silver				Burgundy			
	Period 1	Period 2	Period 3	Period 4	Period 5	Period 6	Period 7	Period 8
Course Name	US HISTORY HON	GEOMETRY	ANAT PHYSIO HON	FRENCH 3 HON	ENG HON 3	AP COMP SCI PRIN	NC STUDY HALL 1	AP PSYCH
Teacher	PITTMAN GREGORY	SPENCER FAITH	STOBINSKY JAY	ST. JULIEN GEEMPS	LEVINE DARREN	RENNIE SANDRA	ZALMAN KEITH	REOVEN RONIT
Course #	21003200	12063100	20003600	07013400	10013800	02003350	22003003	21073500
Room	927	C21	524	911	229	702	1306	C3
Phone #	580-3105	580-3221	580-3064	580-3117	580-3004	580-3053	580-3132	580-3203
	Lunch Shift		A				B	
	7:40-9:10	9:18-10:48	10:56-12:26 11:32-1:02	1:10-2:40	7:40-9:10	9:18-10:48	10:56-12:26 11:32-1:02	1:10-2:40



Block Schedule

	Silver				Burgundy			
	Period 1	Period 2	Period 3	Period 4	Period 5	Period 6	Period 7	Period 8
Course Name	US HISTORY HON	GEOMETRY	ANAT PHYSIO HON	FRENCH 3 HON	ENG HON 3	AP COMP SCI PRIN	NC STUDY HALL 1	AP PSYCH
Teacher	PITTMAN GREGORY	SPENCER FAITH	STOBINSKY JAY	ST. JULIEN GEEMPS	LEVINE DARREN	RENNIE SANDRA	ZALMAN KEITH	REOVEN RONIT
Course #	21003200	12063100	20003600	07013400	10013800	02003350	22003003	21073500
Room	927	C21	524	911	229	702	1306	C3
Phone #	580-3105	580-3221	580-3064	580-3117	580-3004	580-3053	580-3132	580-3203
	Lunch Shift		A				B	
	7:40-9:10	9:18-10:48	10:56-12:26 11:32-1:02	1:10-2:40	7:40-9:10	9:18-10:48	10:56-12:26 11:32-1:02	1:10-2:40



Current Schedule

Per S		Teacher
1	WORLD HISTORY	NASTASI, M
2	SPANISH SPEAK 3 HRS	ROA, A
3	BIOLOGY I	SIERRA, I
4	INT READ EDGE C 10TH	ASHMAN, N
5	ENG II	HASS, D
6	CREATIVE WRITE 3 HRS	FALKOWSKI, M
7	LIBERAL ARTS MATH	HELVERSON, C

Academic History

Course Title	Semester	Grade	Term	School Year
CREATIVE WRIT 1	B		1	2016
ENG 1	D		1	2016
ERTH/SPA SCI	D		1	2016
INTENS READ	B		1	2016
SPANISH SPEAKS	B		1	2016
WORLD CLTRL	C		1	2016

Keep in mind that the courses you select last school year.

BROWA

Consent

Types of

Personally

This incl

Purpose

To inform

week of s

Recipient

Students, parent

Consent

I hereby authoriz

purpose listed ab

Print Parent Name

Parent Signature

Student Name

Aerys Targaryen

Aerys Targaryen

Print name of Parent/Guardian/Student 18 or Over

Signature of Parent/Guardian/Student 18 or Over

?



FINAL REVIEW

Current Schedule

Per S	Teacher	Course Title
1	NASTASI, M	WORLD HISTORY
2	ROA, A	SPANISH SPEAK 3 HNSRS
3	SIERRA, I	BIOLOGY I
4	ASHMAN, N	INT READ EDGE C 10TH
5	HASS, D	ENG II
6	FALKOWSKI, M	CREATIVE WRITE 3 HRS
7	HELVERSON, C	LIBERAL ARTS MATH

Academic History

Course Title	Semester	Grade	Term	School Year
CREATIVE WRIT 1	B		1	2016
ENG 1	D		1	2016
ERTH/SPA SCI	D		1	2016
INTENS READ	B		1	2016
SPANISH SPEAKS	B		1	2016
WORLD CLTRL	C		1	2016

Keep in mind that the courses you select last for the entire 2017-2018 school year.

BROWARD COUNTY PUBLIC SCHOOLS

Consent to Post Student Information During the First Week of School

Types of Information

Personally identifiable student information from education records is confidential and protected by the Family Educational Rights and Privacy Act (FERPA).

This includes: student name, teacher name, room number, grade level and class (subject).

Purpose

To inform students and parents of teacher and room number assignments, and to help facilitate everyone finding the proper place to be during the busy first week of school, our school would like to post this information on the school wall during the first week of the school year.

Recipient of information

Students, parents, school-based staff, and anyone visiting the school will be able to see the posted information.

Consent

I hereby authorize Stoneman Douglas HS staff to post the above-mentioned types of information about my child, [REDACTED], for the purpose listed above. This authorization will expire September, 2018. I further understand I may withdraw my consent in writing at any time.

Aerys Targaryen

Print name of Parent/Guardian/Student 18 or Over

Aerys Targaryen

Signature of Parent/Guardian/Student 18 or Over

?

Stoneman Douglas High School
Targaryen Daeherys
Last Name First Name
2017-2018
0612545678
Grade 11
January 20, 2017
Student Number

Select 7 Courses and 3 Alternates. All Students Will Have a PERSONALIZATION PERIOD as their 8th course.
PRE=Requires Teacher Approval / Signature *Local Honors Only **Biology Is A Pre-Requisite
***Requires Co-Curricular Participation # Satisfies Art Graduation Requirement

CORE COURSES	
LANGUAGE ARTS	
English 3	10013700
PRE DA English 3 Honors	10013800
PRE AP English Language	10014250
PRE ESOL English 3	10023200
PRE Dev Lang (1 Period)	10023811
PRE Dev Lang (2 Periods)	1002381A/1002381B
PRE Intensive Reading	10004105
PRE Learning Strategies	79630802
MATH	
PRE Geometry	12063100
PRE Adv Topics In Math	12983100
PRE Algebra 2	12003300
PRE Math For College Readiness	12007000
PRE Statistics Honors	12103000
PRE Trig Honors	12113000
PRE BH Pre-Calculus Honors	12023400
PRE AP Calculus AB	12023100
PRE AP Calculus BC	12023200
PRE AP Statistics	12103200
SCIENCE	
PRE Environmental Science	20013400
PRE AP Biology	20003400
PRE Chemistry	20033400
PRE Chemistry Honors	20033500
PRE AP Chemistry	20033700
PRE Physics	20033800
PRE Physics Honors	20033900
PRE AP Physics 1	20034210
PRE AP Physics C	20034300
PRE AP Environmental Science	20013800
PRE Anatomy & Physiology Hon**	20003600
PRE Marine Science 1**	20025000
PRE Marine Science 1 Honors**	20025100
PRE Marine Science 2 Honors**	20025300
PRE Astronomy Honors	20209100
SOCIAL STUDIES	
PRE US History	21003100
PRE US History Honors	21003200
PRE US History Honors (AOF)	2100320F
PRE SD AP US History	21003300
PRE AP US History (AOF)	2100330F
WORLD LANGUAGES	
PRE Spanish 1	07083400
PRE Spanish 2	07083500
PRE Spanish 3 Honors	07083600
PRE Spanish 4 Honors	07083700
PRE Spanish Speakers 2	07093100
PRE Spanish Speakers 3 Honors	07093200
PRE AE AP Spanish Language	07084000
PRE AP Spanish Literature	07084100
PRE French 1	07013200
PRE French 2	07013300
PRE French 3 Honors	07013400
PRE AP French Language	07013800
List 3 Alternates in Order of Preference	
Course	Number
1. Yoga	
2. Lead 1 Honors	
3. International Relations Hon	2106440A

CAREER ACADEMIES	
ACADEMY OF FINANCE (DECA Participation Required)	
2. PRE Financial Operations Honors***	88151100
3. PRE Accounting App 1 Honors***	82033100
MARKETING MGMT (DECA Participation Required)	
2. PRE Marketing Appl. Hon***	8827120H
3. PRE Marketing Mgt Hon***	8827130H
HOSPITALITY & TOURISM (DECA Participation Required)	
2. PRE Technology For Hospitality	87031100
3. PRE Hosp. & Tourism Mkt. Hon***	87031200
DIGITAL TECHNOLOGY	
1. Intro To Information Tech #	82073100
2. PRE Digital Design 1 #	82095100
3. PRE Digital Design 2 Honors #	82095200
COMPUTER SCIENCE	
1. PRE Exp Computer Science Honors #	8207310C
2. PRE Found. of Programming Honors	90072100
3. PRE AP Computer Science Principles	02003350
4. PRE AP Computer Science A	02003200
CULINARY ARTS	
2. PRE Culinary Arts 2 #	88005200
3. PRE Culinary Arts 3 Honors #	88005300
TELEVISION PRODUCTION	
1. Television Production 1 #	87721100
2. PRE Television Production 2 #	87721200
3. PRE Television Production 3 Honors	87721300
ENGINEERING	
1. Engineering 1 Honors #	86005500
2. PRE Engineering 2 Honors #	86005200
2. PRE Engineering 3 Honors #	86005600
JROTC	
PRE Leadership Ed & Training 1	18013000
PRE Leadership Ed & Training 2	18013100
PRE Lead & Training 2 Honors*	1801310H
PRE Lead & Training 3	18013200
PRE Lead & Training 3 Honors*	1801320H
HEALTH SCIENCE	
PRE Health Science Honors 2	84171100
PHYSICAL EDUCATION	
PRE CARE & Prev. of Athletic Injury	
PRE Team Sports 1 & 2	Team Sports 3 & 4
PRE Basketball	
PRE Yoga 1/2	Yoga 3/4
PRE Beginning Weight Training	Adv. Weight Training
LEADERSHIP, PEER COUNSELING & TEACHER ASSISTING	
PRE Lead 1 Honors*	PRE Lead 2 Honors*
PRE Peer Counseling 1	PRE Peer Counseling 2
OFF-CAMPUS DUAL ENROLLMENT	
1 DE Course and 1 Off-Campus Study Hall	2200300A
2 DE Courses and 2 Off-Campus Study Halls	2200300B
CREDIT RECOVERY & VIRTUAL LAB	
Edmentum Course	2200300E
Virtual Lab Course	1700300X

ELECTIVES

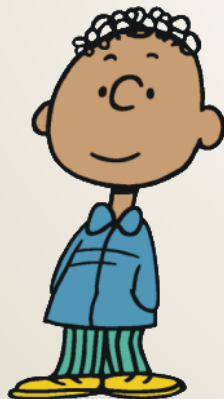
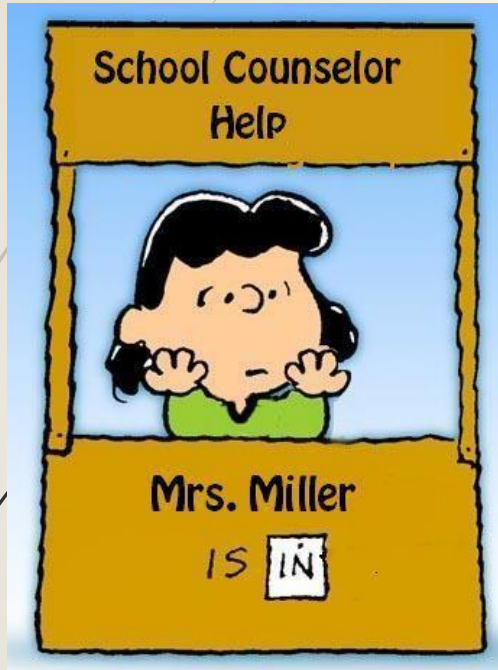
LANGUAGE ARTS ELECTIVES	
PRE AP Capstone Research	17005100
PRE American Literature Honors	10053100
PRE Journalism 1 #	1006300A
PRE Newspaper 2 Honors*	1006310R
PRE Yearbook 2 Honors*	1006310U
PRE Newspaper 3 Honors*	1006320R
PRE Yearbook 3 Honors*	1006320U
PRE Creative Writing 1 & 2	1009320A
PRE Creative Writing 3 & 4 Hon	10093310
PRE Debate 1 Honors* *** #	10073300
PRE Debate 2 Honors* *** #	10073400
PRE Debate 3 Honors* *** #	10073500
PRE Exploratory Teaching 1	89090100
PRE Exploratory Teaching 2	89090200
PRE Exploratory Teaching 3 Hon	89090300
SOCIAL STUDIES ELECTIVES	
PRE International Relations Hon*	2106440A
PRE Psychology I & II Honors*	2107300A
PRE African History Honors*	21093300
PRE Sociology Hon*/Ethics Hon*	21083001
PRE History Holocaust Hon*	21094301
PRE SD AP Psychology	21073500
PRE AP Human Geography	21034000
PRE AP European History	21093800
PRE AP World History	21094200
DRAMA	
PRE Introduction To Drama #	04003000
PRE Theatre 1 #	04003100
PRE Theatre 2 (Production) #	04003200
PRE Theatre 3 Honors (Prod) #	04003300
PRE Acting 1 #	04003700
PRE Acting 2 #	04003800
PRE Acting 3 #	04003900
PRE Technical Theatre 1 #	04004100
PRE Technical Theatre 2 #	04004200
PRE Technical Theatre 3 #	04004300
MUSIC	
PRE Band 3 (Woodwinds) #	1302320A
PRE Band 3 (Brass) #	1302320B
PRE Band 3 (Symphonic) #	1302320C
PRE Band 5 Honors (WS) #	13023401
PRE Percussion 3 #	13024800
PRE Jazz Ensemble 1 #	13025000
PRE Jazz Ensemble 2 #	13025100
PRE Jazz Ensemble 3 #	13025200
PRE Jazz Ensemble 3 (top band) #	1302520i
PRE Eurhythmics 3 (A Guard) #	13053200
PRE Dance Rep 3 (World Guard) #	08004200
PRE Orchestra 3	13023800
PRE Orchestra 5 Honors	13024000
PRE Guitar 1 #	13013200
PRE Guitar 2	13013300
PRE Guitar 3	13013400
PRE Chorus 1 #	13033000
PRE Chorus 2	13033100
PRE Chorus 3	13033200
VISUAL ARTS	
PRE 2D Art 1 (Draw/Paint) #	01013000
PRE 2D Art 2 (Draw/Paint) #	01013100
PRE 2D Art 3 Hon (Draw/Paint) #	01013200
PRE Ceramics 1 #	01023000
PRE Ceramics 2 #	01023100
PRE Ceramics 3 Honors	01023200
PRE Portfolio 1 2D	01093100
PRE Portfolio 2 Drawing	01093200
PRE Portfolio 3 3D	01093300
PRE AP Art 2D	01093500
PRE AP Art 3D	01093600
PRE AP Art Drawing	01043000

Completed Course Selection Cards
Are Due

Thursday, February 6th, 2020
or Friday, February 7th, 2020
To your Personalization Teacher



Students will meet one on one with their guidance counselors to discuss course selections.



Guidance Meetings will take place between February 18th – March 18th

After you have met with your guidance counselor, your approved courses will be entered to create your 2020-2021 schedule.





Choose your courses wisely
and create a schedule you
will commit to and enjoy.

